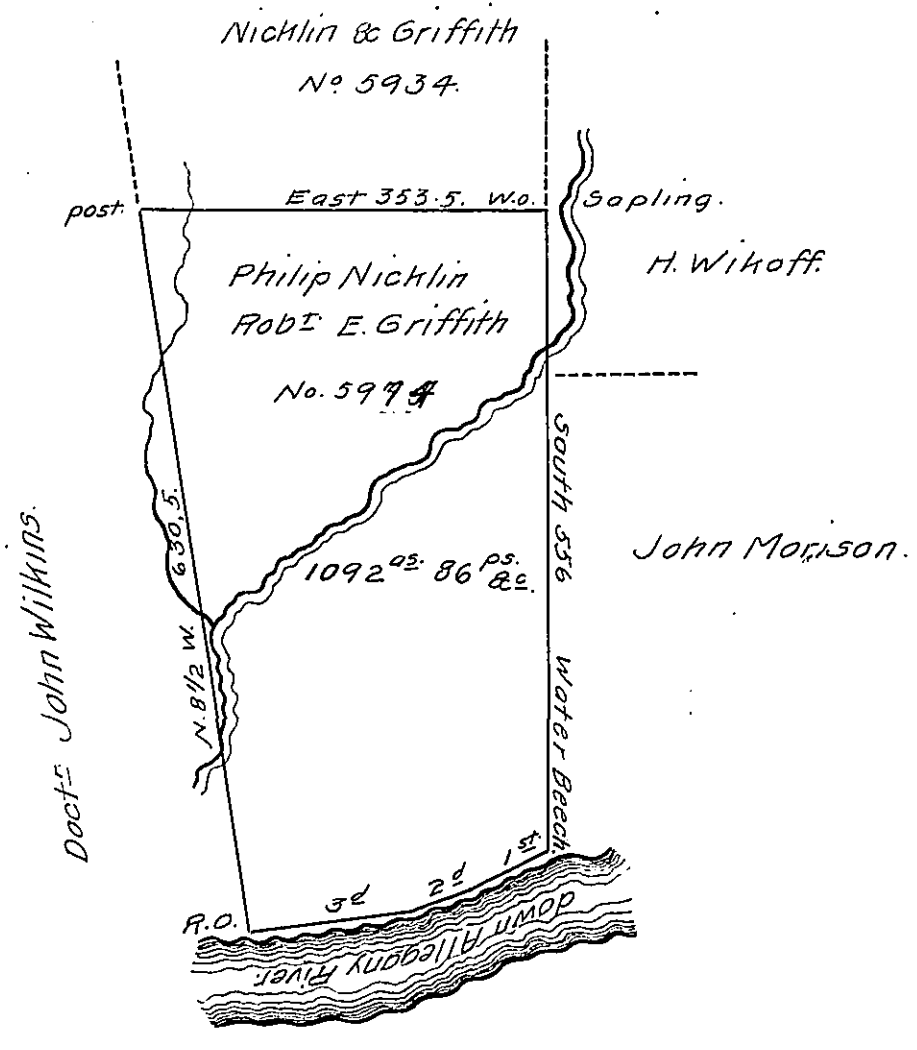


Courses & distances
down the Allegany. -
1st s. 65 W. 80 ps.
2^d s. 71 W. 50 ps.
3^d s. 83 W. 142 ps.
to the red oak.



The Draft of a Tract of Land in Conewango Township, Warren County east of Conewango Creek adjoining to the Allegany river to lands settled by John Morrison, lands warranted to Henry Wikoff to Philip Nicklin & Robert E. Griffith assignees &c and other lands, Surveyed May 12th 1808, in pursuance of a Warrant granted to Philip Nicklin & Robert E. Griffith (assignees of Joseph Boon, who was assignee of John Nicholson) No 5974 bearing date the 19th day of March, 1805.

To Samuel Cochran, Esq; }
Surveyor General. } Sam^l Dale, D.S.

IN TESTIMONY that the above is a copy of the original remaining on file in the Department of Internal Affairs of Pennsylvania, made conformably to an Act of Assembly approved the 16th day of February, 1833, I have hereunto set my Hand and caused the Seal of said Department to be affixed at Harrisburg, this twenty second day of July, 1910.

Henry Honck
Secretary of Internal Affairs.